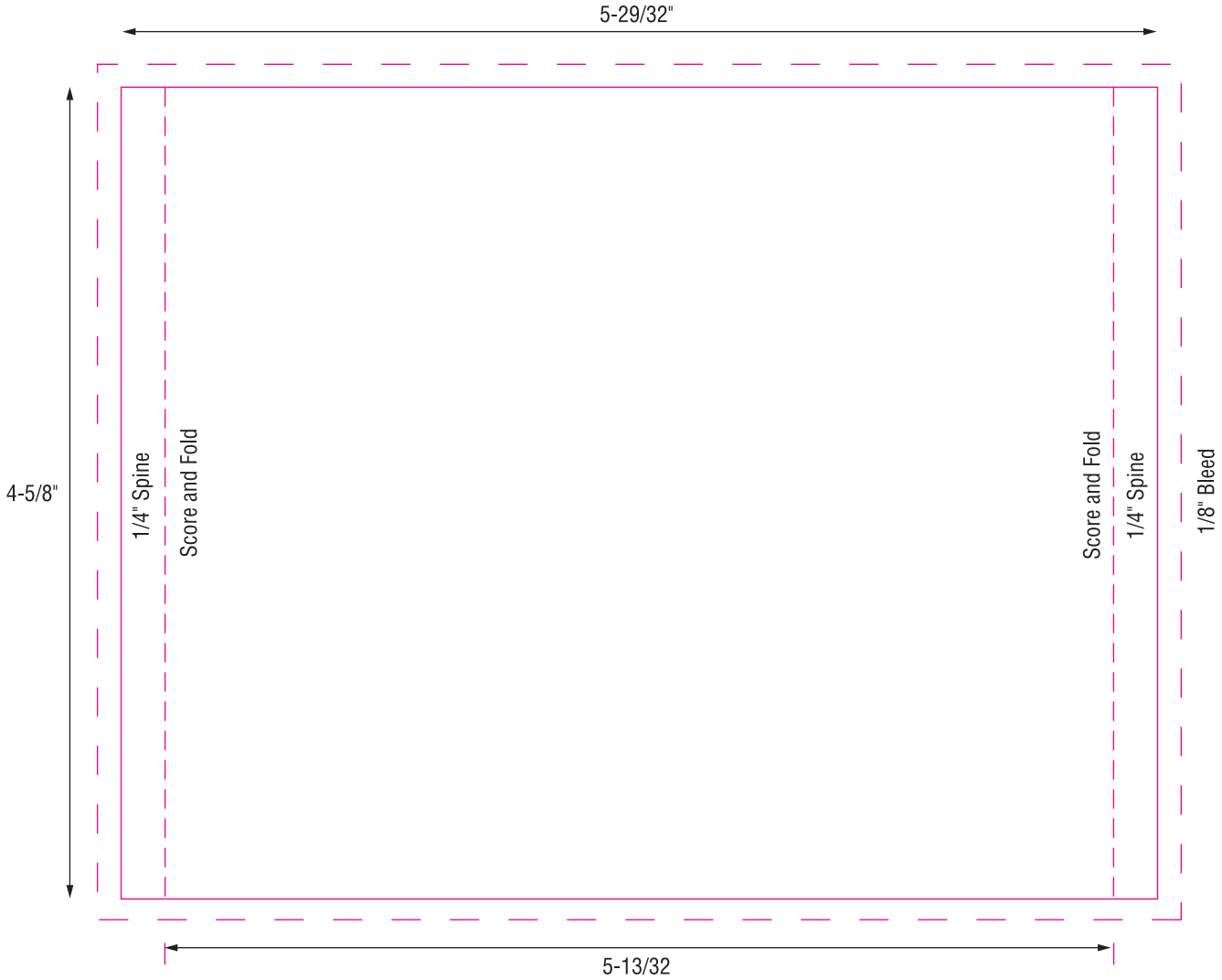


Catalog Number: **2007-01**

Jewel Case Traycard



PARAGON

M E D I A

Single Source. Total Solutions.

55 South Atlantic
Seattle, Washington 98134
206-808-7425 ParagonGroup.com

Portland Facility: 503-235-2211
Chicago Facility: 847-526-1800

Description: <i>Jewel Case Traycard</i>	Version: <i>8-31-03</i>
Finished Size:	Flat Size:
Print Method: <i>Digital and Litho* Offset</i>	Bleed: <i>1/8"</i>
Standard Stock:	Standard Finish:

- Remember to:**
1. Allow 1/8" bleed for Digital and Offset printed materials
 2. Include all your fonts - or save fonts into outlines
 3. Include all linked graphic files.
 4. For best results save graphic files at 300dpi or above.
 5. Place dielines on separate layer

* Art submitted on CD in native file format. Please include laser composite proofs.
* Litho offset are gang run, 4/color process